

AD-24 series



Characteristics

- 1) 24 segments display complete alpha-numeric capabilities.
- 2) Dimensions: 34x24mm.
- 3) The display is available in six colors.
Red, Orange, Yellow, Green, Blue and White.

Alpha-numeric Sample

0123456789

ABCDEFGHIJKLMNOPQRSTUVWXYZ

Absolute Maximum Ratings at Ta=25°C

Item	Symbol	Part Number/Color						Unit
		AD-24R Red	AD-24O Orange	AD-24Y Yellow	AD-24G Green	AD-24B Blue	AD-24W White	
Forward Current	IF	30			20		15	mA
Pulse Forward Current *	IFP	100			48		60	mA
Reverse Voltage	VR			5				V
Power Dissipation	PD	81			78		60	mW
Operating Temperature Range	Topr			-30 to +85				°C
Storage Temperature Range	Tsol			-30 to +100				°C

* Duty1/10, Pulse Width 1ms(R, O, Y)
Duty1/20, Pulse Width 1ms(B, G, W)

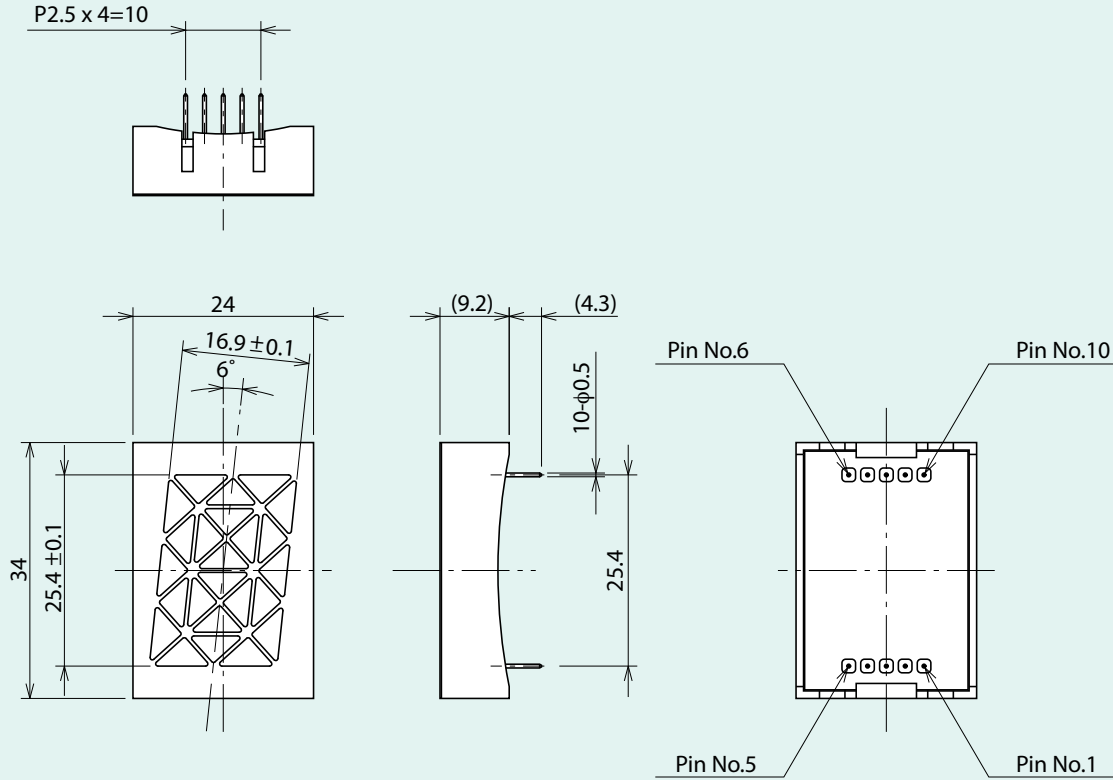
Optical Characteristics at Ta=25°C

Item		Part Number/Color					
		AD-24R Red	AD-24O Orange	AD-24Y Yellow	AD-24G Green	AD-24B Blue	AD-24W White
Forward Voltage	Typ(V)		1.9		3.4		3.2
	IF(mA)		20			10	
Reverse Current	Max(mA)			100			
	VR(V)			5			
Peak Wavelength	λ_p Typ(nm)	635	609	592	522	465	-
	IF(mA)		20		10		-
Spectral line half-width	$\Delta\lambda$ Typ(nm)		15		35	26	-
	IF(mA)		20		10		-
Luminous Intensity	Min (mcd)		25		96	17	45
	Typ (mcd)	50	65		160	34	65
	IF(mA)		20			10	

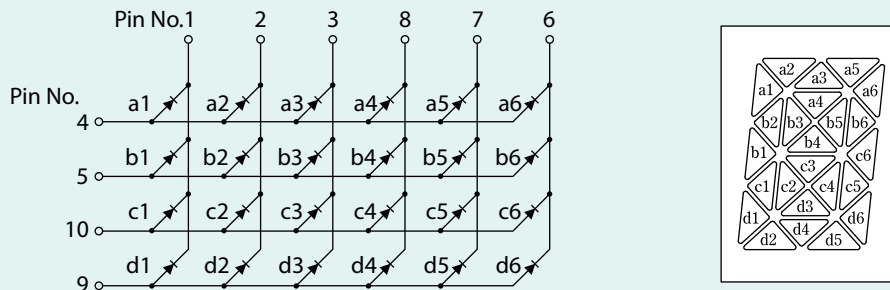
* Value for one LED Segment

Package Dimensions

Unit: mm
Tolerance: ± 0.2



Circuit diagram



The appearance and specifications of the product may be modified for improvement without notice.